

Appendix Vol 2
Post Harvey Site Photos 2017

Table of Contents

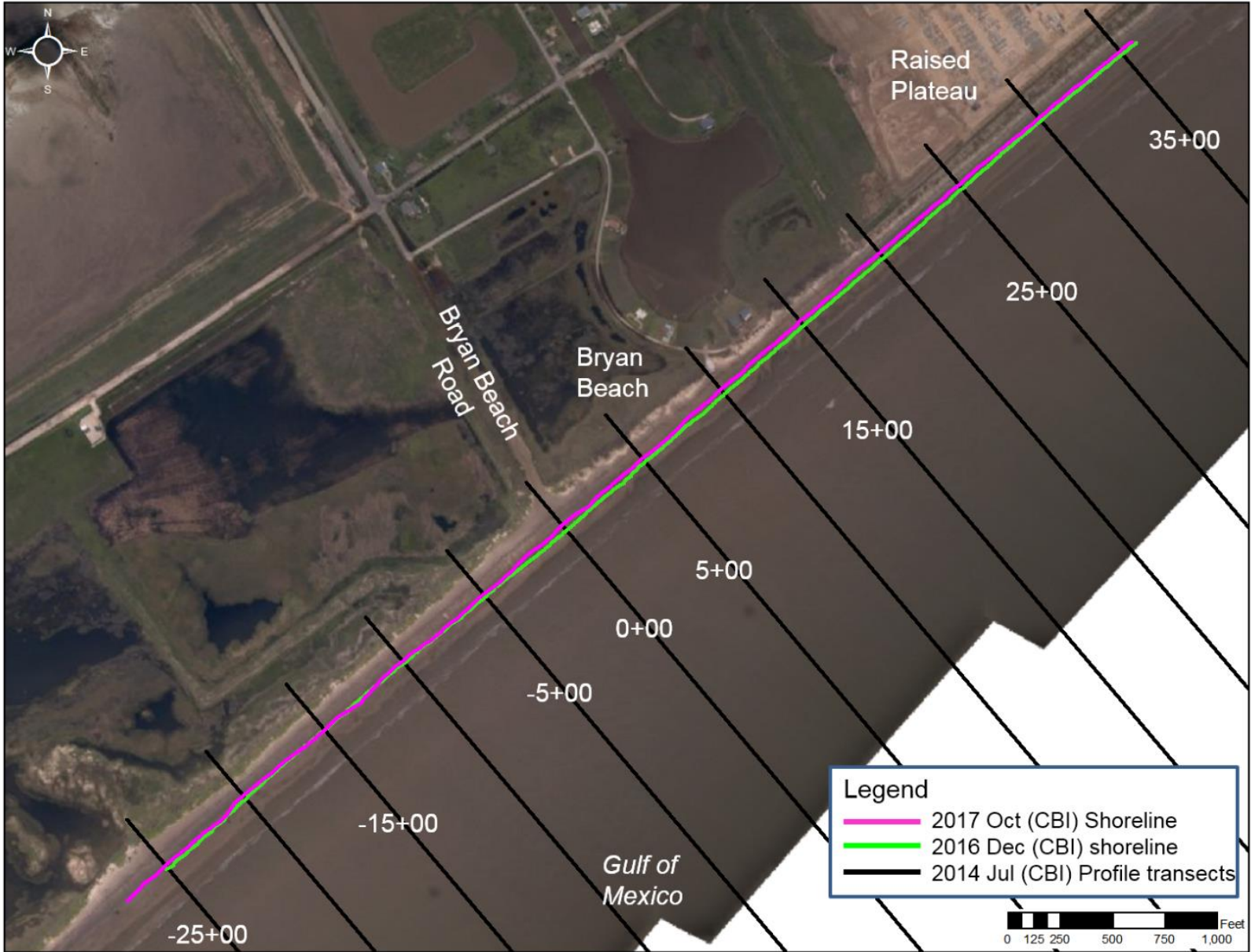
Bryan Beach: Site Photos	3
Indianola Beach: Site Photos	18
North Beach: Site Photos	66
Rockport Beach: Site Photos	75
Sargent Beach: Site Photos	105
Surfside Beach: Site Photos	138
Sylvan Beach: Site Photos	162

CEPRA Beach Monitoring Program:

Bryan Beach: Site Photos

Post-Hurricane Harvey

11 Dec 2017





North of STA -25+00



South of STA -25+00



North of STA -20+00



South of STA -20+00



North of STA -15+00



South of STA -15+00



North of -10+00



South of STA -10+00



North of STA -5+00



South of STA -5+00



North of STA 0+00



South of STA 0+00



North of STA 5+00



South of STA 5+00



North of STA 10+00



South of STA 10+00



North of STA 15+00



South of STA 15+00



North of STA 20+00



South of STA 20+00



North of STA 25+00



South of STA 25+00



North of STA 30+00



South of STA 30+00



North of STA 35+00



South of STA 35+00

CEPRA Beach Monitoring Program:

Indianola Beach: Site Photos

Post- Hurricane Harvey

7 Dec 2017





Northwest of STA 0+00



Southeast of STA 0+00



Northwest of STA 1+00



Southeast of STA 1+00



Northwest of STA 1+70



Southeast of STA 1+70



Northwest of STA 3+00



Southeast of STA 3+00



Northwest of STA 4+00



Southeast of STA 4+00



Northwest of STA 5+00



Southeast of STA 5+00



Northwest of STA 6+00



Southeast of STA 6+00



Northwest of STA 7+00



Southeast of STA 7+00



Northwest of STA 8+00



Southeast of STA 8+00



Northwest of STA 9+00



Southeast of STA 9+00



Northwest of STA 10+00



Southeast of STA 10+00



Northwest of STA 11+00



Southeast of STA 11+00



Northwest of STA 12+30



Southeast of 12+30



Northwest of STA 13+00



Southeast of STA 13+00



Northwest of STA 14+00



Southeast of STA 14+00



Northwest of STA 15+00



Southeast of STA 15+00



Northwest of STA 17+00



Southeast of STA 17+00



Northwest of STA 19+00



Southeast of STA 19+00



Northwest of STA 21+00



Southeast of STA 21+00



Northwest of STA 23+00



Southeast of STA 23+00



Northwest of STA 25+00



Southeast of STA 25+00



Northwest of STA 27+00



Southeast of STA 27+00



Northwest of STA 29+00



Southeast of STA 29+00



Northwest of STA 31+00



Southeast of STA 31+00



Northwest of STA 33+00



Southeast of STA 33+00



Northwest of STA 33+70



Southwest of STA 33+70



Northwest of STA 34+60



Southeast of STA 34+60



Northwest of STA 35+00



Southeast of STA 35+00



Northwest of STA 36+00



Southeast of STA 36+00



Northwest of STA 36+50



Southeast of STA 36+50



Northwest of STA 38+00



Southeast of STA 38+00



Northwest of STA 39+00



Southeast of STA 39+00



Northwest of STA 40+00



Southeast of STA 40+00



Northwest of STA 41+00



Southeast of STA 41+00



Northwest of STA 42+00



Southeast of STA 42+00



Northwest of STA 43+00



Southeast of STA 43+00



Northwest of STA 44+00



Southeast of STA 44+00



Northwest of STA 45+00



Southeast of STA 45+00



Northwest of STA 45+80



Southeast of STA 45 +80



Northwest of 46+30



Southeast of STA 46+30



Northwest of STA 47+00



Southeast of STA 47+00



Northwest of STA 47+70



Southeast of STA 47+70



Northwest of STA 48+20



Southeast of STA 48+20



Northwest of STA 49+00



Southeast of STA 49+00



Northwest of STA 49+30



Southeast of STA 49+30



Northwest of STA 50+00



Southeast of STA 50+00

CEPRA Beach Monitoring Program:

North Beach: Site Photos

Post-Hurricane Harvey

15 Jan 2018



Transect 22+00, closer to the bay looking SW toward the Lexington



Transect 24+00, closer to the street looking SW toward the Lexington



Transect 14+00, closer to the street looking NE toward Fajitaville



Transect 14+00, closer to the street looking NE toward Fajitaville, enlarged.



Transect 14+00, closer to the bay looking SW toward the Lexington



Transect 14+00, closer to the bay looking NE toward Fajitaville



Between Transect 16+00 & 18+00 by closer to the bay looking NE toward Fajitaville



Between Transect 28+00 & 30+00, just S. of Surfside Park, closer to the bay looking NE toward Villa Del Sol



Transect 22+00, closer to the bay looking NE toward Villa Del Sol



Transect 64+00, closer to the bay looking NE toward the Jetty



Transect 64+00, closer to the bay looking NE toward the Jetty



Transect 58+00, closer to the street looking NE toward the Jetty



Transect 58+00, closer to the bay looking NE toward the Jetty



Transect 68+00, closer to the bay looking NE toward the Jetty



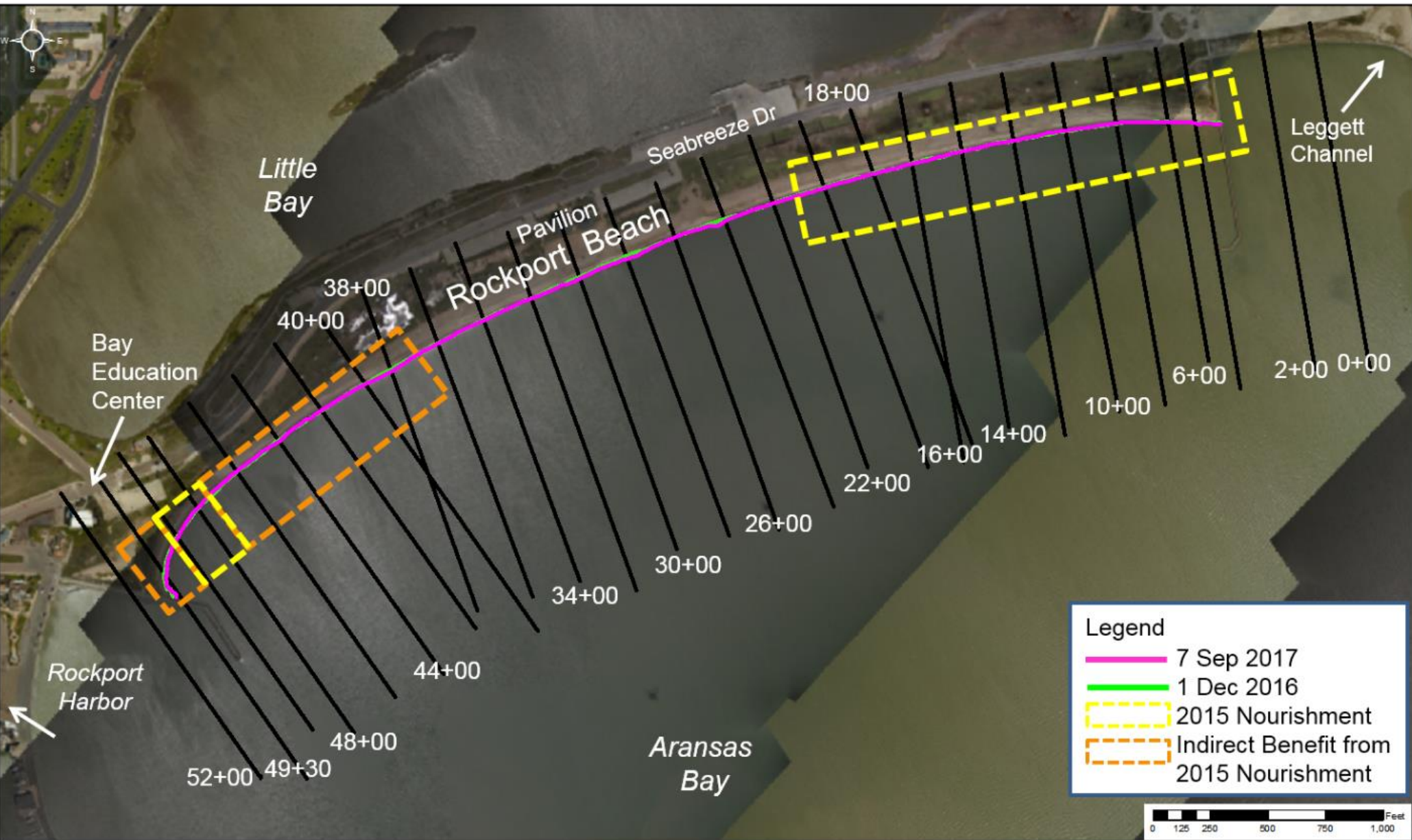
Transect 58+00, closer to the bay looking SW toward the Lexington

CEPRA Beach Monitoring Program:

Rockport Beach: Site Photos

Post-Hurricane Harvey

30 Dec 2017





North of STA 0+00



South of STA 0+00



North of STA 2+00



South of STA 2+00



North of STA 5+00



South of STA 5+00



North of STA 6+00



South of STA 6+00



North of STA 8+00



South of STA 8+00



North of STA 10+00



South of STA 10+00



North of STA 12+00



South of STA 12+00



North of STA 14+00



South of STA 14+00



North of STA 16+00



South of STA 16+00



North of STA 18+00



South of STA 18+00



North of STA 20+00



South of STA 20+00



North of STA 22+00



South of STA 22+00



North of STA 24+00



South of STA 24+00



North of STA 26+00



South of STA 26+00



North of STA 28+00



South of STA 28+00



North of STA 30+00



South of STA 30+00



North of STA 32+00



South of STA 32+00



North of STA 34+00



South of STA 34+00



North of STA 36+00



South of STA 36+00



North of STA 38+00



South of STA 38+00



North of STA 40+00



South of STA 40+00



North of STA 42+00



South of STA 42+00



North of STA 44+00



South of STA 44+00



North of STA 46+00



South of STA 46+00



North of STA 48+00



South of STA 48+00



North of STA 49+30



South of STA 49+30



North of STA 50+50



South of STA 50+50



North of STA 52+00



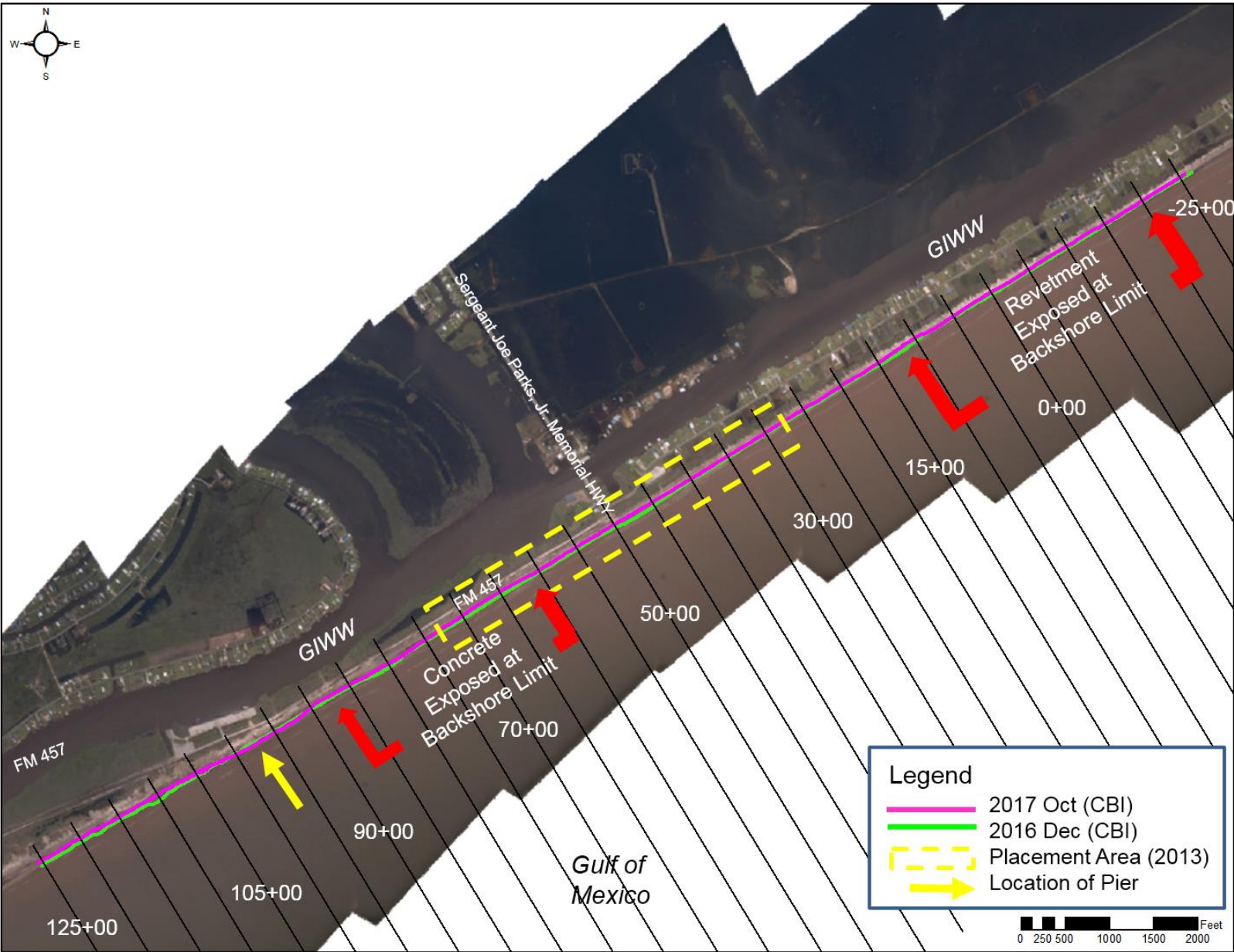
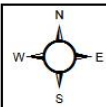
South of STA 52+00

CEPRA Beach Monitoring Program:

Sargent Beach: Site Photos

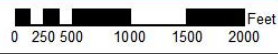
Post-Hurricane Harvey

12 Oct 2017



Legend

- 2017 Oct (CBI)
- 2016 Dec (CBI)
- - - Placement Area (2013)
- Location of Pier





North of STA -25+00



South of STA -25+00



North of STA -20+00



South of STA -20+00



North of STA -15+00



South of STA -15+00



North of STA -10+00



South of STA -10+00



North of STA -5+00



South of STA -5+00



North of STA 0+00



South of STA 0+00



North of STA 5+00



South of STA 5+00



North of STA 10+00



South of STA 10+00



North of STA 15+00



South of STA 15+00



North of STA 20+00



South of STA 20+00



North of STA 25+00



South of STA 25+00



North of STA 30+00



South of STA 30+00



North of STA 35+00



South of STA 35+00



North of STA 40+00



South of STA 40+00



North of STA 45+00



South of STA 45+00



North of STA 50+00



South of STA 50+00



North of STA 55+00



South of STA 55+00



North of STA 60+00



South of STA 60+00



North of STA 65+00



South of STA 65+00



North of STA 70+00



South of STA 70+00



North of STA 75+00



South of STA 75+00



North of STA 80+00



South of STA 80+00



North of STA 85+00



South of STA 85+00



North of STA 90+00



South of STA 90+00



North of STA 95+00



South of STA 95+00



North of STA 100+00



South of STA 100+00



North of STA 105+00



South of STA 105+00



North of STA 110+00



South of STA 110+00



North of STA 115+00



South of STA 115+00



North of STA 120+00



South of STA 120+00



North of STA 125+00



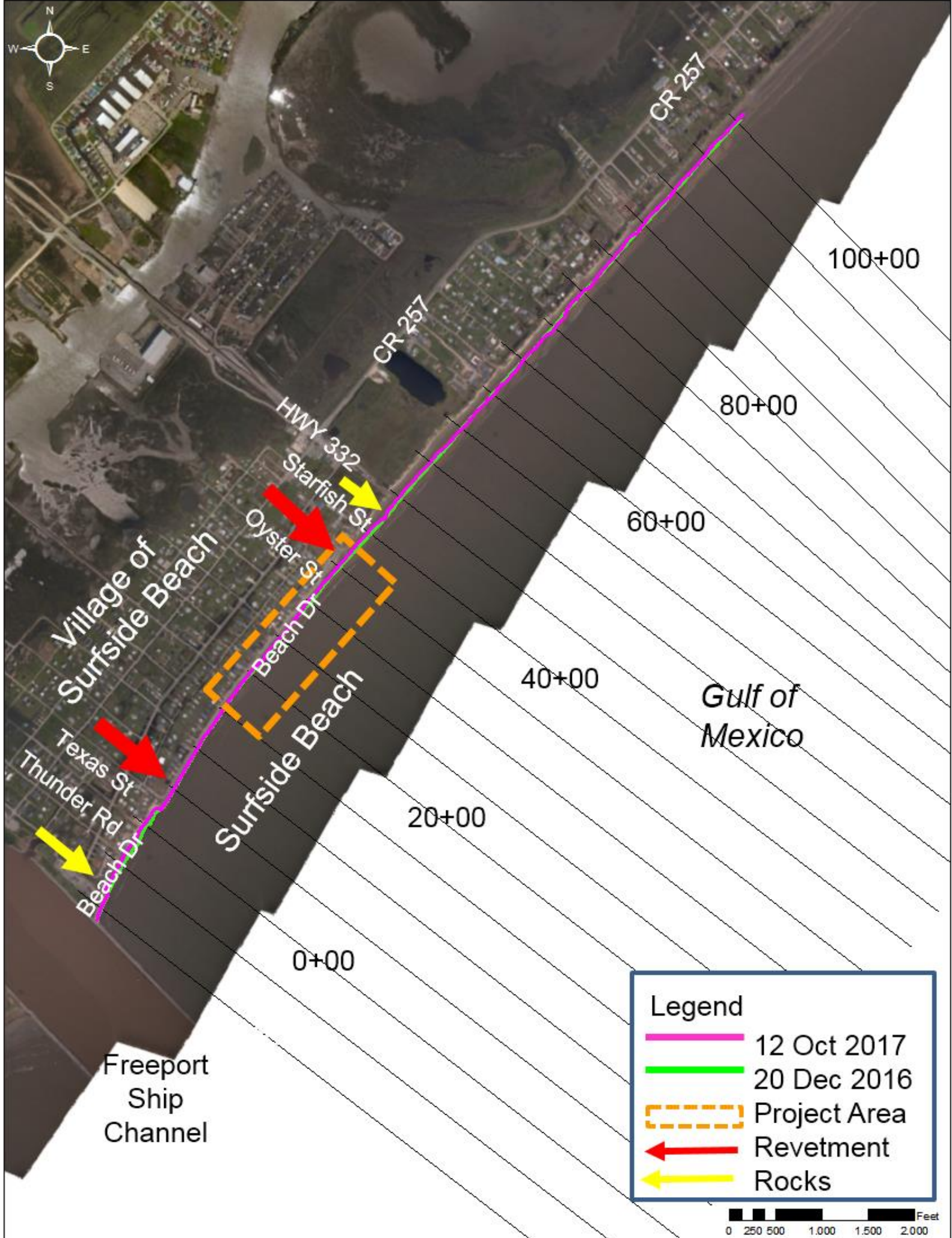
South of STA 125+00

CEPRA Beach Monitoring Program:

Surfside Beach: Site Photos

Post-Hurricane Harvey

11 Dec 2017



Village of
Surfside Beach

Texas St
Thunder Rd
Beach Dr

Surfside Beach

Freeport
Ship
Channel

CR 257

CR 257

HWY 332
Starfish St
Oyster St
Beach Dr

100+00

80+00

60+00

40+00

20+00

0+00

Gulf of
Mexico

Legend

- 12 Oct 2017
- 20 Dec 2016
- Project Area
- ← Revetment
- ← Rocks





North of STA -10+00



South of STA -10+00



North of STA -5+00



South of STA -5+00



North of STA 0+00



South of STA 0+00



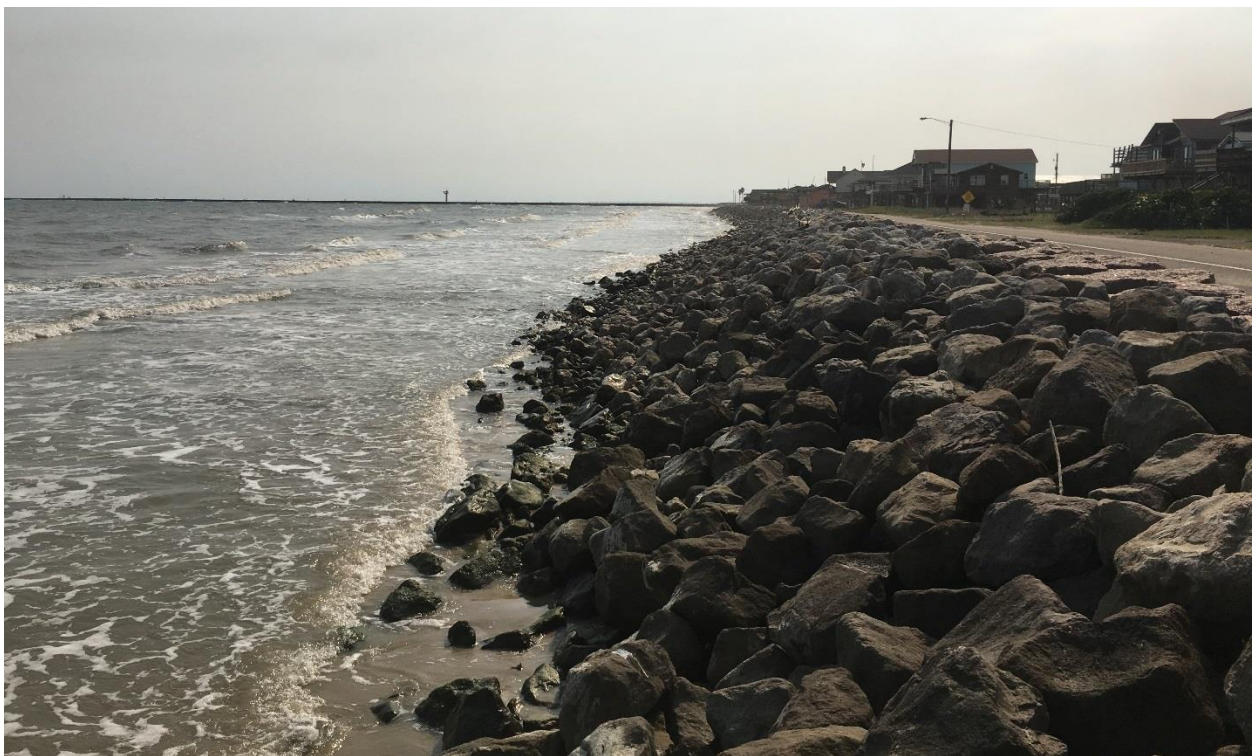
North of STA 5+00



South of STA 5+00



North of STA 15+00



South of STA 15+00



North of STA 20+00



South of STA 20+00



North of STA 25+00



South of STA 25+00



North of STA 30+00



South of STA 30+00



North of STA 35+00



South of STA 35+00



North of STA 40+00



South of STA 40+00



North of STA 45+00



South of STA 45+00



North of STA 50+00



South of STA 50+00



North of STA 55+00



South of STA 55+00



North of STA 60+00



South of STA 60+00



North of STA 65+00



South of STA 65+00



North of STA 70+00



South of STA 70+00



North of STA 75+00



South of STA 75+00



North of STA 80+00



South of STA 80+00



North of STA 85+00



South of STA 85+00



North of STA 90+00



South of STA 90+00



North of STA 95+00



South of STA 95+00



North of STA 100+00



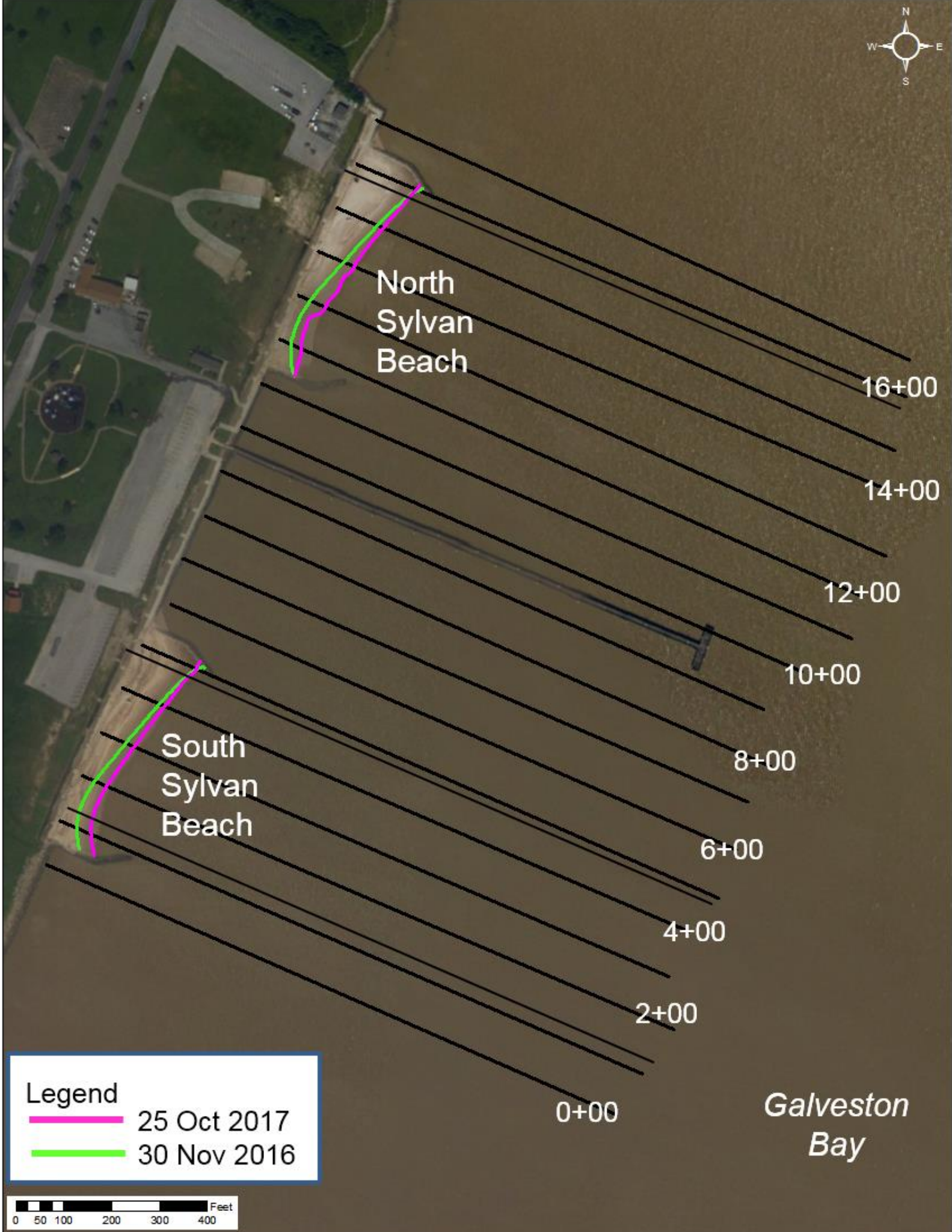
South of STA 100+00

CEPRA Beach Monitoring Program:

Sylvan Beach: Site Photos

Post- Hurricane Harvey

7 Dec 2017



North
Sylvan
Beach

South
Sylvan
Beach

16+00

14+00

12+00

10+00

8+00

6+00

4+00

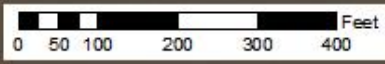
2+00

0+00

*Galveston
Bay*

Legend

-  25 Oct 2017
-  30 Nov 2016





North of STA 0+00



South of STA 0+00



North of STA 1+00



South of STA 1+00



North of STA 2+00



South of STA 2+00



North of STA 3+00



South of STA 3+00



North of STA 4+00



South of STA 4+00



North of STA 5+00



South of STA 5+00



North of STA 6+00



South of STA 6+00



North of STA 7+00



South of STA 7+00



North of STA 8+00



South of STA 8+00



North of STA 9+00



South of STA 9+00



North of STA 10+00



South of STA 10+00



North of STA 11+00



South of STA 11+00



North of STA 12+00



South of STA 12+00



North of STA 13+00



South of STA 13+00



North of STA 14+00



South of STA 14+00



North of STA 15+00



South of STA 15+00



North of STA 16+00



South of STA 16+00

CEPRA Beach Monitoring Program:
Sylvan Beach: Damage Photos
Post-Hurricane Harvey
29 April 2017









