

Appendix Vol I
Post Harvey Site Photos 2017

Table of Contents

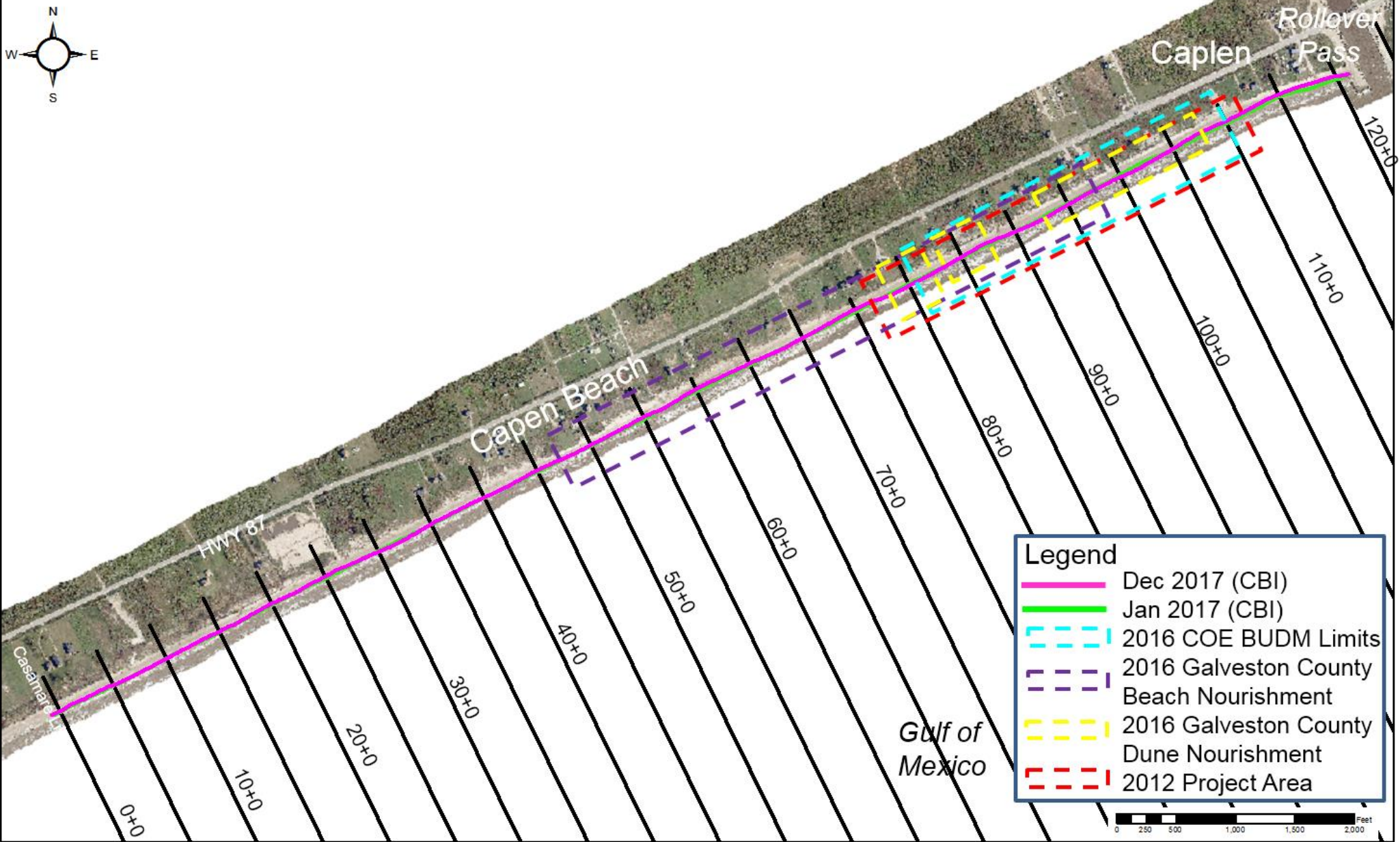
Bolivar Peninsula-Caplen Beach: Site Photos	3
Bolivar Peninsula-Gilchrist: Site Photos	30
Jamaica Beach: Site Photos.....	49
McGee Beach: Site Photos	60
University Beach: Site Photos	77

CEPRA Beach Monitoring Program:

Bolivar Peninsula-Caplen Beach: Site Photos

Post-Hurricane Harvey

30 Dec 2017





North of STA 0+00



South of STA 0+00



North of STA 5+00



South of STA 5+00



North of STA 10+00



South of STA 10+00



North of STA 15+00



South of STA 15+00



North of STA 20+00



South of STA 20+00



North of STA 25+00



South of STA 25+00



North of STA 30+00



South of STA 30+00



North of STA 35+00



South of STA 35+00



North of STA 40+00



South of STA 40+00



North of STA 45+00



South of STA 45+00



North of STA 50+00



South of STA 50+00



North of STA 55+00



South of STA 55+00



North of STA 60+00



South of STA 60+00



North of STA 65+00



South of STA 65+00



North of STA 70+00



South of STA 70+00



North of STA 75+00



South of STA 75+00



North of STA 80+00



South of STA 80+00



North of STA 85+00



South of STA 85+00



North of STA 90+00



South of STA 90+00



North of STA 95+00



South of STA 95+00



North of STA 100+00



South of STA 100+00



North of STA 105+00



South of STA 105+00



North of STA 110+00



South of STA 110+00



North of STA 115+00



South of STA 115+00



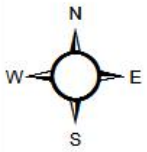
North of STA 120+00



South of STA 120+00

**CEPRA Beach Monitoring Program:
Bolivar Peninsula-Gilchrist: Site Photos
Post-Hurricane Harvey**

30 Dec 2017



Rollover Bay

Gilchrist Beach

HWY 87

Leger St

200+0

190+0

180+0

170+0

160+0

150+0

140+0

130+0

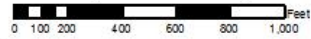
125+6

Gulf of Mexico

Rollover Pass

Legend

- Dec 2017 (CBI)
- Jan 2017 (CBI)





North of STA 125+00



South of STA 125+00



North of STA 126+50



South of STA 126+50



North of STA 130+00



South of STA 130+00



North of STA 135+00



South of STA 135+00



North of STA 140+00



South of STA 140+00



North of STA 145+00



South of STA 145+00



North of STA 150+00



South of STA 150+00



North of STA 155+00



South of STA 155+00



North of STA 160+00



South of STA 160+00



North of STA 165+00



South of STA 165+00



North of STA 170+00



South of STA 170+00



North of STA 175+00



South of STA 175+00



North of STA 180+00



South of STA 180+00



North of STA 185+00



South of STA 185+00



North of STA 190+00



South of STA 190+00



North of STA 195+00



South of STA 195+00



North of STA 200+00



South of STA 200+00

CEPRA Beach Monitoring Program:

Jamaica Beach: Site Photos

Post- Hurricane Harvey

7 Dec 2017





North of STA 385+00



North of STA 390+00



South of STA 390+00



North of STA 395+00



South of STA 395+00



North of STA 400+00



South of STA 400+00



North of STA 405+00



South of STA 405+00



North of STA 410+00



South of STA 410+00



North of STA 415+00



South of STA 415+00



North of STA 420+00



South of STA 420+00



North of STA 425+00



South of STA 425+00

CEPRA Beach Monitoring Program:

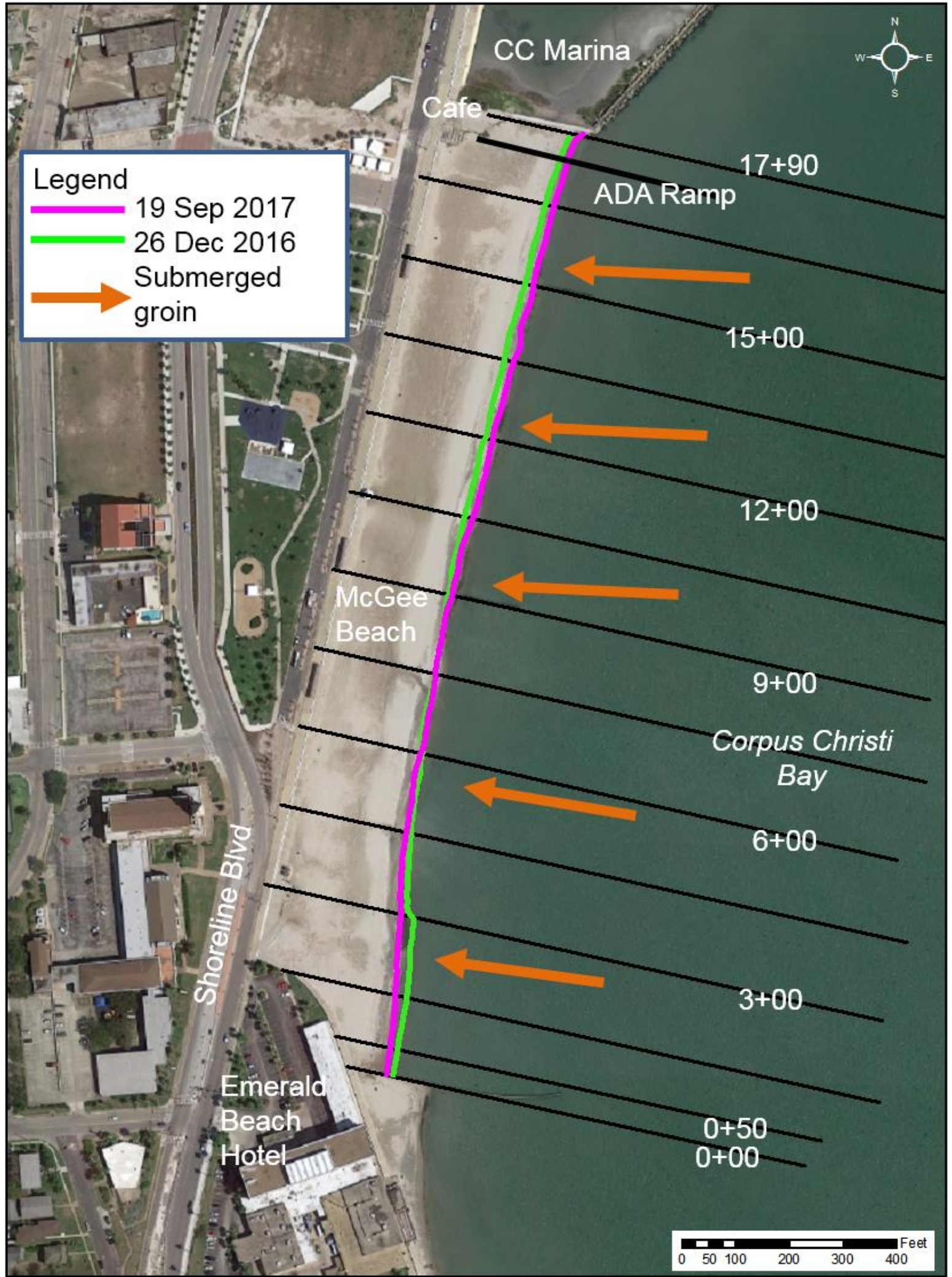
**McGee Beach: Site Photos
Post-Hurricane Harvey**

3 Oct 2017



Legend

- 19 Sep 2017
- 26 Dec 2016
- Submerged groin



CC Marina

Cafe

17+90

ADA Ramp

15+00

12+00

McGee Beach

9+00

Corpus Christi Bay

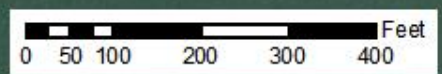
6+00

Shoreline Blvd

3+00

Emerald Beach Hotel

0+50
0+00





North of STA 0+00



South of STA 0+00



North of STA 0+50



South of STA 0+50



North of STA 1+50



South of STA 1+50



North of STA 3+00



South of STA 3+00



North of STA 4+50



South of STA 4+50



North of STA 6+00



South of STA 6+00



North of STA 7+50



South of STA 7+50



North STA of 9+00



South of STA 9+00



North of STA 10+50



South of STA 10+50



North of STA 12+00



South of STA 12+00



North of STA 13+50



South of STA 13+50



North of STA 15+00



South of STA 15+00



North of STA 16+50



South of STA 16+50

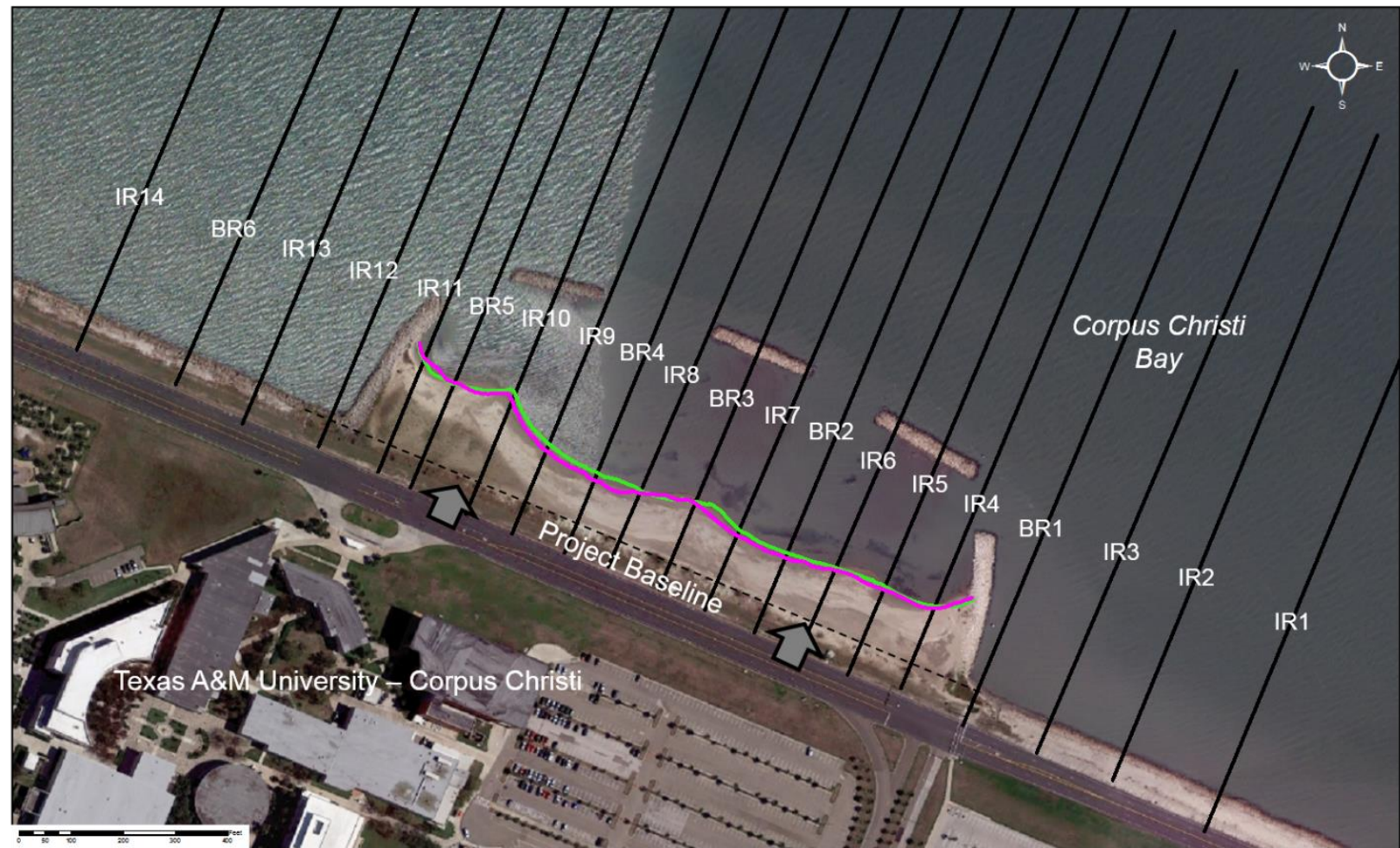


North of STA 17+90



South of STA 17+90

**CEPRA Beach Monitoring Program:
University Beach: Site Photos
Post-Hurricane Harvey
3 Oct 2017**





Northwest of IR1



Southeast of IR1



Northwest of IR2



Southeast of IR2



Northwest of IR3



Southeast of IR3



Northwest of BR1



Southeast of BR1



Northwest of IR5



Southeast of IR5



Northwest of IR4



Southeast of IR4



Northwest of IR6



Southeast of IR6



Northwest of BR2



Southeast of BR2



Northwest of IR7



Southeast of IR7



Northwest of BR3



Southeast of BR3



Northwest of IR8



Southeast of IR8



Northwest of BR4



Southeast of BR4



Northwest of IR9



Southeast of IR9



Northwest of IR10



Southeast of IR10



Northwest of IR10



Southeast of BR3



Northwest of BR5



Southeast of BR5



Northwest of IR11



Southeast of IR11



Northwest of IR12



Southeast of IR12



Northwest of IR13



Southeast of IR13



Northwest of BR6



Southeast of BR6